



FALCON GROUP

FALCON BATCH PLANT

COMPANY PROFILE

2018





FALCON GROUP

FALCON GROUP

Empire Business Complex

5th Floor, Bldg. C4

Erbil, Iraq

Tel: +964 (0) 66 258 6008

Tel: +964 (0) 66 258 6009

www.falconiraq.com

FALCON BATCH PLANT

Iraq / Erbil

100 m. street

Tell: +964 (0) 750 788 8048

[Email: karam@empireiraq.com](mailto:karam@empireiraq.com)



About us :

We are specialized company in concrete with the experience of 10 years, using the updated international standards, falcon having 3 new modern concrete batch plants around the area.

All concretes are laboratory passed tests, in addition we are using the additives to all concretes and accordingly to the standardized measures. also having 4 concrete pumps and 16 concrete mixers trucks. And have ability to set a concrete batch plant (mobile)inside your site.

Pledge:

The Falcon batch plant pledge is to deliver the highest quality of service not only to our corporate clients but also to the ultimate customer and end user – the Iraqi people.



Projects :

Falcon Batch Plant manufactures concrete using the latest equipment and machines.

The Batch Plant can produce 240m³ of concrete per hour (Wight mix). We operate using the latest computer systems and programs as well as house a special laboratory for testing cubes in order to ensure the highest quality of product.

Some of our projects have included :

- **Chra Mall.**
- **Tablo Mall.**
- **Sofi Mall.**
- **Qaisari Mall.**

Additionally, we have been proud to provide concrete to Baiban City Project, the new Erbil Silo Project, along with Abu-Shahab City Project, and of course our own project **Empire World.**



Empire World Project -- the our biggest Work



- **Our Services :**

- Providing and supplying concrete to the site plans , using the latest manufactures and vehicles .
- The high quality of the product guarantee.
- Commitment of time working , according to the progress of the work table.
- Offering the competitive prices for costumers.



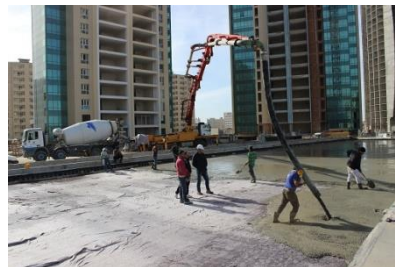
Civil work - Concrete Work

Technical Capabilities in Concrete Work :

FALCON Batch plant extensive and complete product line of concrete products systems ensures falcon to be service the needs of our customers.

Typical concrete projects include:

- Towers and apartment .
- Airport runways.
- Light duty parking.
- Residential subdivisions.



Crush Aggregates for Concrete

Fine and coarse aggregate (sand and gravel). We use for reinforcement concrete (usually for beams, columns and floor slab) mix a coarse aggregate of max 19-20 mm .

Water:

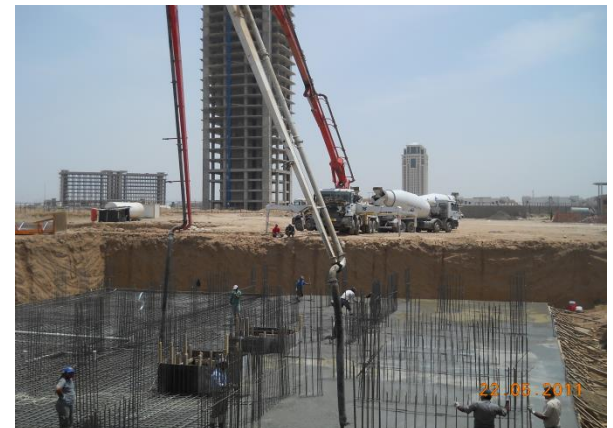
Drinking water, is usually suitable as production water.

Cement:

Portland cement with strength of at least N/mm^2 after 28 days and a rapid early hardening. We use best quality cement type 1

Additive:

Main sodamco weber, chryso, sika .



Concrete mix design

Reference Code:

ASTM	American stand arts
EN	European Norm
NEN	Nederland E. Norm

Reference Books:

Beton pocket 2006

ENCI cement group

Maastricht / the Netherlands

Building design and civil engineering handbook

Edward s. Hoffman

President, Edward s. Hoffman, Ltd.,
Structural engineers , Chicago

David Gustafson

Vice President of Engineering

Concrete Reinforcing Steel institute,
Schaumburg , Illinois

